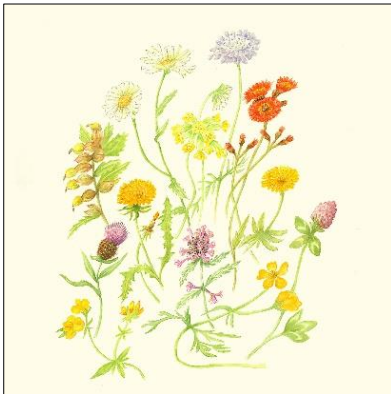


Judy Kennedy

Greetings Cards



In 2023 we invited Judy Kennedy to produce a series of botanical paintings of the trees, bushes and wildflowers we have planted in Craven Crescent Green. We used the paintings to illustrate the interpretation board that stands on the Green. At our invitation she has now used the paintings to create three Greetings Cards as shown here and has kindly agreed for us to sell them to raise funds to support our Environment Group activities in the village.



(A) hay meadow



(B) trees and bushes



(C) wetland plants

Judy says “I have always enjoyed painting and as a primary school teacher I was very involved in the art curriculum. However, it was not until 12 years ago that I went to a residential course at Missenden Abbey in botanical painting and became hooked. My husband always encouraged me to take a diploma in botanical painting but it was not until after his death and a period of serious illness myself that I decided to apply for a place at the Chelsea School of Botanical Painting. It was a year spent having lectures at the Chelsea Physic Garden and then several years producing a portfolio that was judged by the RHS that I gained my diploma. My final Project was submitting six paintings from the church fields. I go on a residential course two times a year to Salisbury and I do a zoom class with an excellent teacher each Thursday. I was delighted when the Addingham Environment Group asked me to illustrate the newly planted wildflowers in Craven Crescent Green.”

